



Government of India
Ministry of Earth Sciences



India Meteorological Department

PRESS RELEASE - 2

Time of issue: 1400 hours IST

Dated: 03-04-2021

Sub: Depression weakened into a well marked low pressure area over north Andaman Sea & adjoining south Myanmar coast

Brief History:

A low pressure area formed over southeast Bay of Bengal & neighbourhood in the early morning (0530 hours IST) of 31st March, 2021. It lay as a well marked low pressure area over central parts of Andaman Sea & neighbourhood in the afternoon (1430 hours IST) of 1st April, 2021. It concentrated into a depression over north Andaman Sea & neighbourhood in the early morning (0530 hours IST) of today, the 2nd April, 2021. The system moved north-northeastwards and maintained its intensity till 3rd April morning (0830 hours IST).

Current status:

The depression over north Andaman Sea & neighbourhood moved north-northeastwards and weakened into a well marked low pressure area over north Andaman Sea and adjoining south Myanmar coast at 1130 hrs IST of today, the 03rd April, 2021. It is likely to weaken further into a Low Pressure Area over the same region during next 12 hours.

Warnings:

(i) Rainfall

Light to moderate rainfall at few places (upto 6 cm) very likely over Andaman & Nicobar Islands during next 24 hours.

(ii) Wind warning

Squally winds speed reaching 25-35 kmph gusting to 45 kmph very likely over north Andaman Sea during next 06 hours and decrease thereafter.

(iii) Sea condition

Sea condition will be rough over north Andaman Sea during next 12 hours and improve thereafter.

(iv) Fishermen Warning

The fishermen are advised not to venture into north Andaman Sea owing to the likely prevalence of occasional squally weather over the region during next 12 hours.

24 hours realised heavy rainfall (≥ 7 cm) ending at 0830 hours of 3rd April:

Light to moderate rainfall occurred at most places with isolated heavy falls over Andaman Islands during past 24 hours ending at 0830 hrs IST of today, the 3rd April 2021.

Port Blair reported 7 cm rainfall during the above period.

This is last Press Release in association with this system.

Kindly visit www.rsmcnewdelhi.imd.gov.in and www.mausam.imd.gov.in for updates on the system.

Contact: Cyclone Warning Division, Office of the Director General of Meteorology,
India Meteorological Department, Ministry of Earth Sciences.

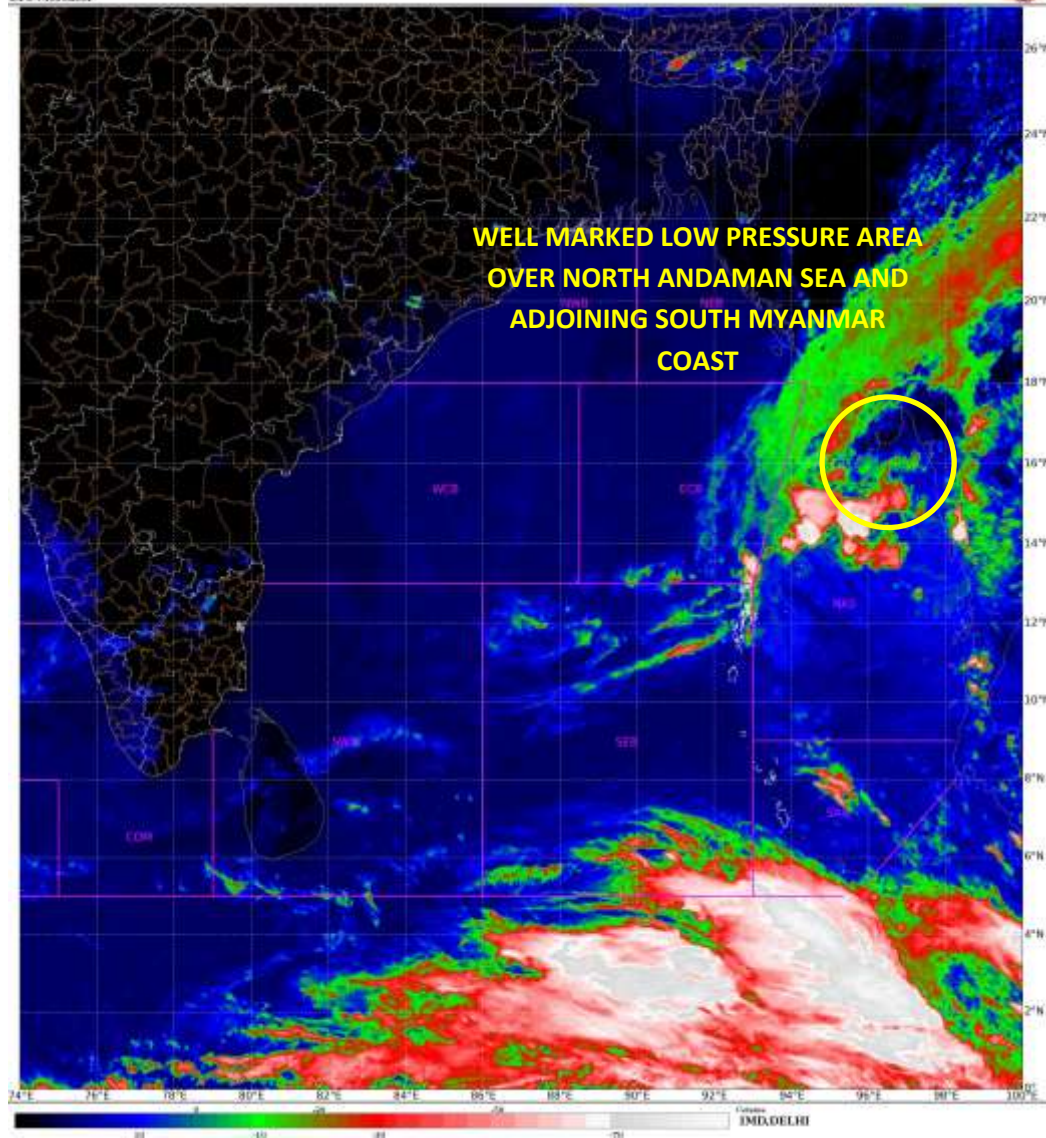
Phone: (91) 11-24652484, FAX: (91) 11-24643128, 24623220, E-mail: cwdhq2008@gmail.com, Website: rsmcnewdelhi.imd.gov.in

Spatial rainfall distribution: Isolated: <25%, A few: 26-50%, Many: 51-75%, Most: 76-100%

Rainfall amount (mm): Heavy rain: 64.5 – 115.5, Very heavy rain: 115.6 – 204.4, Extremely heavy rain: 204.5 or more.

SAT : INSAT-3DR IMG
IMG_TIR1_TEMP 10.0 um
1.1C Mercator

03-04-2021(0715 to 0742) GMT
03-04-2021(13245 to 1313) IST



Contact: Cyclone Warning Division, Office of the Director General of Meteorology,
India Meteorological Department, Ministry of Earth Sciences.

Phone: (91) 11-24652484, FAX: (91) 11-24643128, 24623220, E-mail: cwdhq2008@gmail.com, Website: rsmcnewdelhi.imd.gov.in

Spatial rainfall distribution: Isolated: <25%, A few: 26-50%, Many: 51-75%, Most: 76-100%

Rainfall amount (mm): Heavy rain: 64.5 – 115.5, Very heavy rain: 115.6 – 204.4, Extremely heavy rain: 204.5 or more.



OBSERVED AND FORECAST TRACK OF DEPRESSION OVER NORTH ANDAMAN SEA & ADJOINING SOUTH MYANMAR COAST BASED ON 0600 UTC OF 3rd APRIL, 2021.



DATE/TIME IN UTC
IST=UTC + 0530

L: LOW PRESSURE AREA

WML: WELL MARKED LOW PRESSURE AREA

D: DEPRESSION (17-27 KT)

DD: DEEP DEPRESSION (28-33 KT)

CS: CYCLONIC STORM (34-47 KT)

SCS: SEVERE CYCLONIC STORM (48-63KT)

VSCS: VERY SEVERE CYCLONIC STORM (64-89 KT)

ESCS: EXTREMELY SEVERE CYCLONIC STORM (90-119 KT)

SuCS: SUPER CYCLONIC STORM (≥ 20 KT)

● LESS THAN 34 KT

○ 34-47 KT

○ ≥ 48 KT

— OBSERVED TRACK

— FORECAST TRACK

▲ CONE OF UNCERTAINTY

Contact: Cyclone Warning Division, Office of the Director General of Meteorology,
India Meteorological Department, Ministry of Earth Sciences.

Phone: (91) 11-24652484, FAX: (91) 11-24643128, 24623220, E-mail: cwdhq2008@gmail.com, Website: rsmcnewdelhi.imd.gov.in

Spatial rainfall distribution: Isolated: <25%, A few: 26-50%, Many: 51-75%, Most: 76-100%

Rainfall amount (mm): Heavy rain: 64.5 – 115.5, Very heavy rain: 115.6 – 204.4, Extremely heavy rain: 204.5 or more.